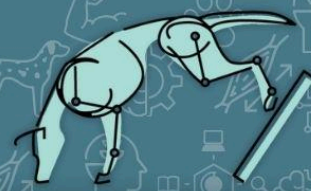


Platform Dimensions

LEARN | SHARE | COLLABORATE



Sitting Platform

Width x 25%

Initial Width + 10%



Standing Platform

1 inch / 2.5cm

Initial Width + 10%



Foot Targets

Width x 25%

Initial Width + 10%



NOTE: These ratios are intended to serve as a guide. They are not “law”. Do your best to follow the formula within reason. The majority of dogs will be able to use dimensional lumber as the platform top. Large and extra large dogs will need to use $\frac{3}{4}$ - 1 inch plywood.